



L I G H T  
S C A L E



# L I G H T S C A L E

Blonde is the most popular color in professional salons and the most searched-for color on the major Social Networks.

But let's not limit it to a color, **Blonde is an attitude,**  
a lifestyle.



What's the secret?  
LETTING YOURSELF BE WON OVER



L I G H T  
S C A L E



CHARCOAL

# 10 LIGHT SCALE UP TO

THE NEW CHARCOAL BLEACH PASTE  
WITH **LIGHTENING POWER UP TO 10** LEVELS CREATING  
THE **PERFECT BLONDE** LEAVING HAIR HEALTHY AND  
HYDRATED



500 g Sachet

**UP TO 10 LEVELS LIGHTER**

**#CHEWOW:**

The wow effect of the dark charcoal bleach paste  
vs the absolute blonde results.

Progressive processing time up to 90 minutes.

Can be used with a heat source to accelerate  
processing time.

Suitable for all techniques\*.

\* Closed in foil strips or transparent sheets: no swelling or leaking;  
hair stays hydrated. Free-hand: no solidifying or drying when  
left uncovered



# 10 LIGHT SCALE UP TO



**Charcoal Sugar Complex**, a **dual-action** complex of sugars and charcoal.

The **sugars** work on the surface, in the cuticle, **protecting and hydrating the hair throughout the lightening process**.

The **Charcoal**, not only gives the bleaching paste its characteristic black color, it also **neutralises unwanted yellow/orange undertones whilst purifying the hair**.

The combination of the **Charcoal Sugar Complex** and the **Blend of Natural Oils** makes the **formula gentler, leaving hair visibly healthy**.

This **progressive lightening formula** allows processing up **to 90 minutes** exceeding the standard maximum processing time of normal bleaches.

# CHAR



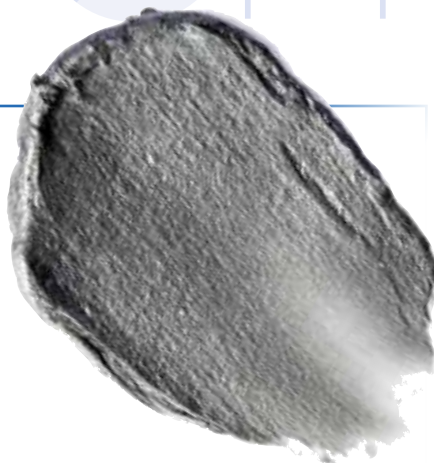
## CHARCOAL SUGAR COMPLEX

It is widely used in skin care, but the properties of this totally **eco-friendly** active ingredient are also perfect for hair care.

Charcoal is a highly porous, odourless and tasteless powder, obtained by burning wood or the shells or stones of fruit.

Its purifying, cleansing, anti-smog and detoxifying properties make it highly versatile and effective in cosmetics.

The same active ingredient is used for whitening teeth and used in many whitening toothpastes.



## LIGHTENING PROCESS

**1** \_\_\_\_\_  
Massage the sachet every time you use the **product to activate the blend of nourishing oils inside it.**

**3** \_\_\_\_\_  
Use in a **dilution ratio of 1:1.5/ 1:2** with **10-20-30** volume developer based on the fluidity desired and the result you want to achieve.

**2** \_\_\_\_\_  
Leave-in time **60-90 minutes**. After **40/45 minutes**, check the **lightening level achieved by rinsing a strand of hair.**

**4** \_\_\_\_\_  
If you need to achieve a higher degree of lightening, add a **second application without rinsing the product off.**



### 5 - TO COMPLETE THE SERVICE

Once the leave-in time has finished, massage with a little water and rinse.

Wash thoroughly with a specific shampoo (**Top Care Color After Color Care Acid Shampoo**) to eliminate any residual traces of oil.

### 6 - TECHNICAL TIPS

Do not apply the product on ultra-bleached tips to avoid the appearance of grey/iridescent light blue highlights. To prevent the bleaching paste from coming into contact with the tips, we recommend using **Lisaplex™ Hair Structure Filler (\*)**.

(\*) Lisaplex™ recommends carrying out an accurate diagnosis before any colour removing service and not to use Lisaplex™ if a colour removing service has not been carried out without Lisaplex™.



# LIGHT SCALE UP TO

BLEACH POWDER WITH

THE **LIGHTENING POWER UP TO 9 LEVELS**

FOR THE **PERFECT BLONDE**

SUGAR



500 g Tin

**UP TO 9 LEVELS LIGHTER**

White bleach powder, easier detection  
of the tones achieved.

**AMMINOSUGAR CARE COMPLEX**

To boost the lightening process with total hair  
protection.

Acts faster than the average bleaching products  
on the market.

Suitable for all techniques.





**Amino Sugar Care Complex**, a dual-action complex of **sugars**, **amino acids**, **cysteine** and **glycine**.

The **sugar** work on the surface, in the cuticle, **to maintain hydration and nourish damaged hair**.

The **amino acids** penetrate into the hair structure preserving the **damaged keratin structure**.

**Cysteine and Glycine (\*)** act inside the keratin bonds to **reinforce the hair and boost the lightening process** for an even better result.

**Hair is protected, restructured, reinforced and lightened without damage.**

\*Present as derivatives in the product.

## PROTECTION AND NUTRITION

### Cysteine and Glycine

work within the keratin bonds and capillary structures, strengthening the hair, promoting the lightening process and leaving the hair healthy.



## LIGHTENING PROCESS

1

For a safe lightening service, mix **30 g of Light Scale Up-To-9 + 45/60 ml of Developer 10/20/30 Vol.**

2

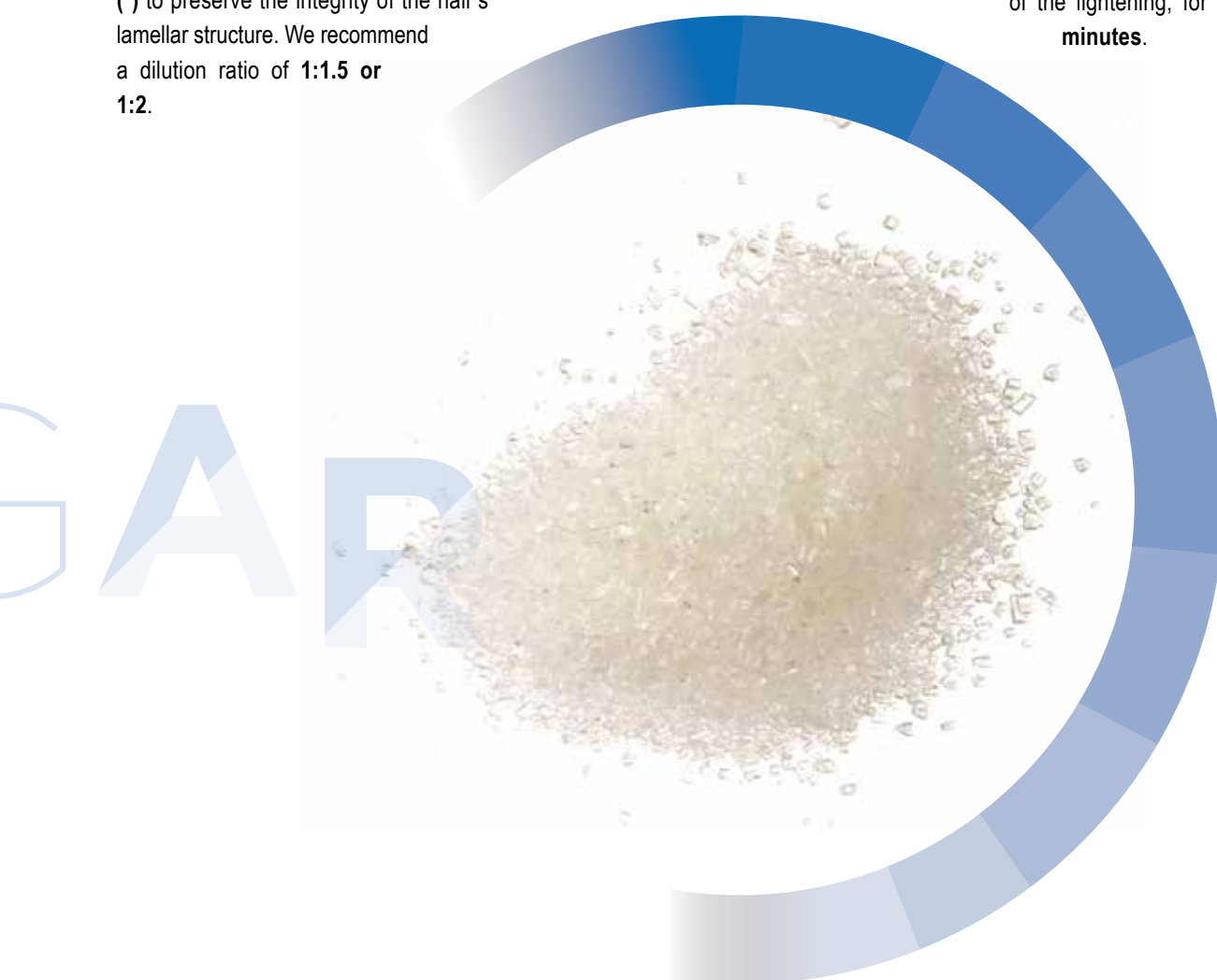
The choice of quantity (**1:1.5 or 1:2**) and the developer volume (10/20/30) depends on the desired texture and target lightening level.

3

Once mixed, add **5 ml of Lisaplex™ Bond Saver (\*)** to preserve the integrity of the hair's lamellar structure. We recommend a dilution ratio of **1:1.5 or 1:2**.

4

The **leave-in time** depends on the desired result of the lightening, for a maximum of **60 minutes**.



### 5 - TO COMPLETE THE SERVICE

Wash thoroughly with a specific shampoo (**Top Care Color After Care Color Acid Shampoo**) to avoid reactivating the bleaching process. To complete the service, apply 20 ml of **Lisaplex™ Hair Structure Filler\*** depending on the hair structure..

### 6 - TECHNICAL TIPS

Before bleaching, spray the hair with **Lisap Absolute Spray** to rebalance the porosity of the hair and hydrate it without masking the lightening process.

(\*) Lisaplex™ recommends carrying out an accurate diagnosis before any colour removing service and not to use Lisaplex™ if a colour removing service has not been carried out without Lisaplex™.

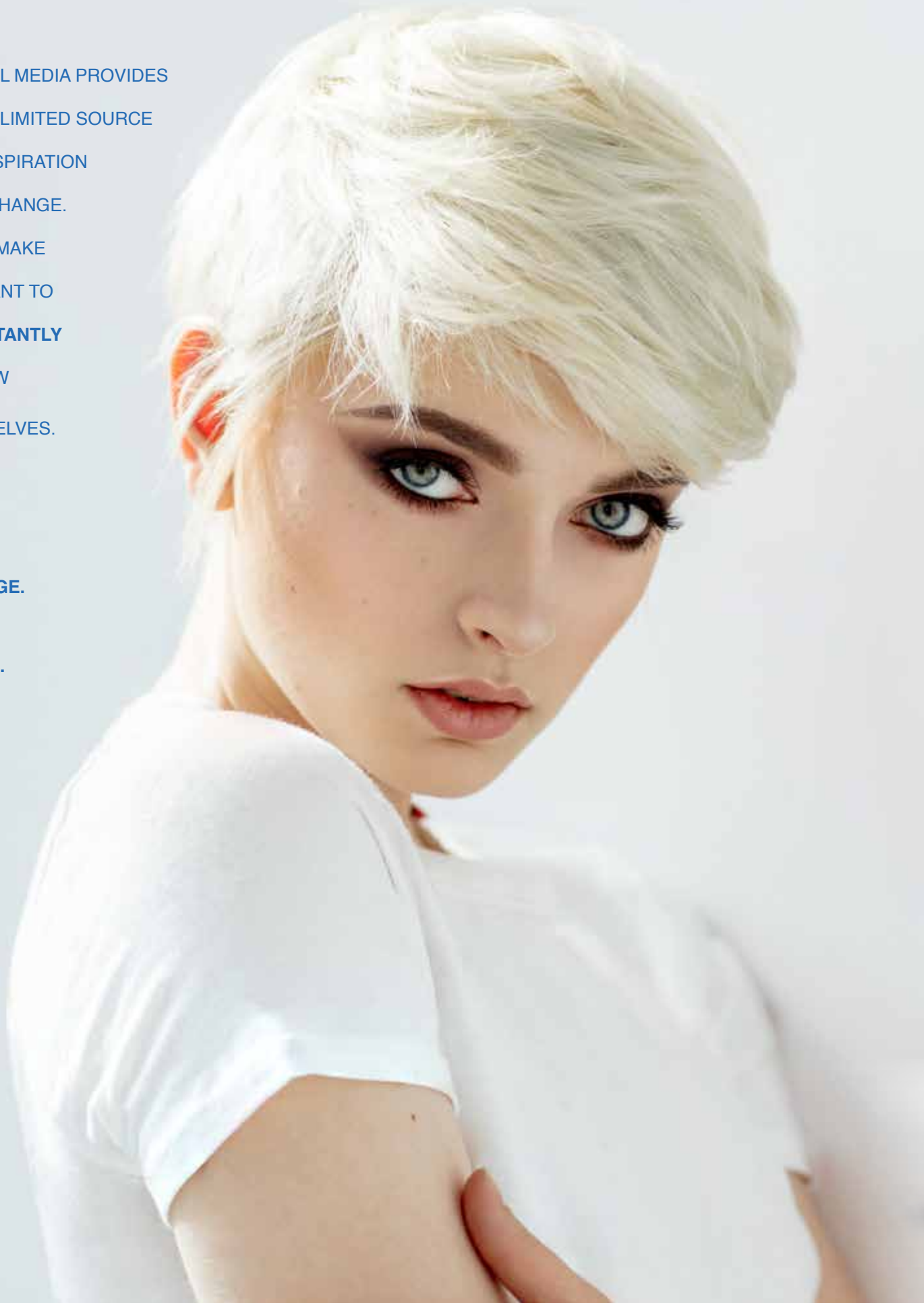
# TRY CHANGE

SOCIAL MEDIA PROVIDES  
AN UNLIMITED SOURCE  
OF INSPIRATION  
FOR CHANGE.  
THEY MAKE  
US WANT TO  
**CONSTANTLY**  
RENEW  
OURSELVES.

**TRY.**

**CHANGE.**

**AGAIN.**



# AGAIN

L I G H T  
S C A L E

## **LIGHT SCALE COLOR REMOVER** **THE PROFESSIONAL COLOR REMOVER TO ELIMINATE** **OR CORRECT A COSMETIC COLOR**

HIGHLY COSMETIC COLOR REMOVER POWDER

ACTS RAPIDLY TO REMOVE THE PERMANENT COSMETIC OR TONE ON  
TONE COLOR

REMOVES COLOR OVERLOAD

ELIMINATES UNWANTED HIGHLIGHTS

THE COLOR REMOVER TECHNOLOGY EVENS OUT THE COLOR  
WITH DAMAGING THE STRUCTURE OR WEAKENING THE HAIR



Pack of 12 x 25  
single-use sachets

## Lanolin<sup>and</sup> Rice Starch

Lanolin and Rice Starch, two totally eco-friendly active ingredients.

**Lanolin** and **Rice Starch**, two totally eco-friendly active ingredients.

**Lanolin** adds **softness and hydration** thanks to its emollient properties, **creating a protective and breathable film on the hair**, to prevent excessive water evaporation.

Thanks to its high Vitamin D content, **Rice Starch** adds **nourishment and shine to even the duller hair**, gently lifting it.

**Light Scale Color Remover** is ideal for lightening artificial hair pigments in particular, transitioning from a dark artificial color to a lighter artificial color and removing overloads to even out the coloring.



**AMMINOSUGAR  
CARE COMPLEX**

L I G H T  
S C A L E

## PROCESS

Light Scale Color Remover acts on the hair based on the chosen mixture

### ULTRA-LIGHT COLOUR REMOVER

This technique allows you to remove color overload and unwanted highlights.

- Mix a sachet of Light Scale Color Remover + 60 ml of hot water;
- Apply the mixture on the parts to be treated with a brush or shaker;
- Leave in for 1 to 10 minutes and check from time to time based on the colour result you want to achieve.

### LIGHT COLOR REMOVER

This technique allows you to lighten artificially dyed hair by 1-2 tone levels.

#### Application method:

- Mix a sachet of Light Scale Color Remover + 60 / 75 ml Developer 10 Vol.;
- Apply the mask with a brush on the areas to treat, isolating the roots with strips of cotton wool;
- Leave in and visually check the progress of the lightening until the desired result is achieved;
- Rinse and then, wash using Top|Care® Repair After Color Care Acid Shampoo. Proceed with the desired color.



### MEDIUM COLOUR REMOVER

This technique allows you to lighten artificially dyed hair by 2-3 tone levels.

#### Application method:

- Mix a sachet of Light Scale Color Remover + 60 / 75 ml Developer 20 Vol.;
- Apply the mask with a brush on the areas to treat, isolating the root with strips of cotton wool;
- Leave in and visually check the progress of the lightening until the desired result is achieved;
- Rinse and then, wash using Top|Care® Repair After Color Care Acid Shampoo.

The application methods depend on the starting cosmetic colour and type of hair.

### TECHNICAL TIPS

Before the bleaching service, distribute Top|Care® Repair Curly Care Mousse, a highly nourishing conditioning mousse, all over the hair, to protect it and leave the structure soft and silky.

# COLOUR

LIGHT SCALE

NO TWO BLONDES ARE THE SAME.

EACH IS THE EXPRESSION OF ITS CREATOR AND THE  
INDIVIDUALITY OF THE ONE WHO CHOOSES TO WEAR IT.

**PLAY WITH YOUR HAIR AND CHOOSE**

**YOUR FAVOURITE TONER**

**WELCOME TO THE FUTURE**

**OF BLONDES**



L I G H T  
S C A L E



# LIGHT SCALE

## A FOUR-TONE PALETTE

THAT ENHANCES BLONDE HAIR AFTER BLEACHING,  
RESTORING LUMINOSITY, SHINE AND ENHANCING

ALL THE UNIQUE FACETS OF  
MULTI-DIMENSIONAL COLOURING.



- **Demi-permanent oxidative hair dye**
- **three-dimensional ultra-performance pigments** for **intense and luminous reflections**
- **reduces any undesired undertones** after bleaching
- **prevents further lightening of the hair** while respecting the desired colour result
- **does not overload pure lightening effects** with unwanted shades

## CREATE YOUR BLONDE

EACH OF THE SHADES CAN BE PERFECTLY  
INTER- MIXED FOR UNIQUE PERSONALISED  
COLOUR EFFECTS.

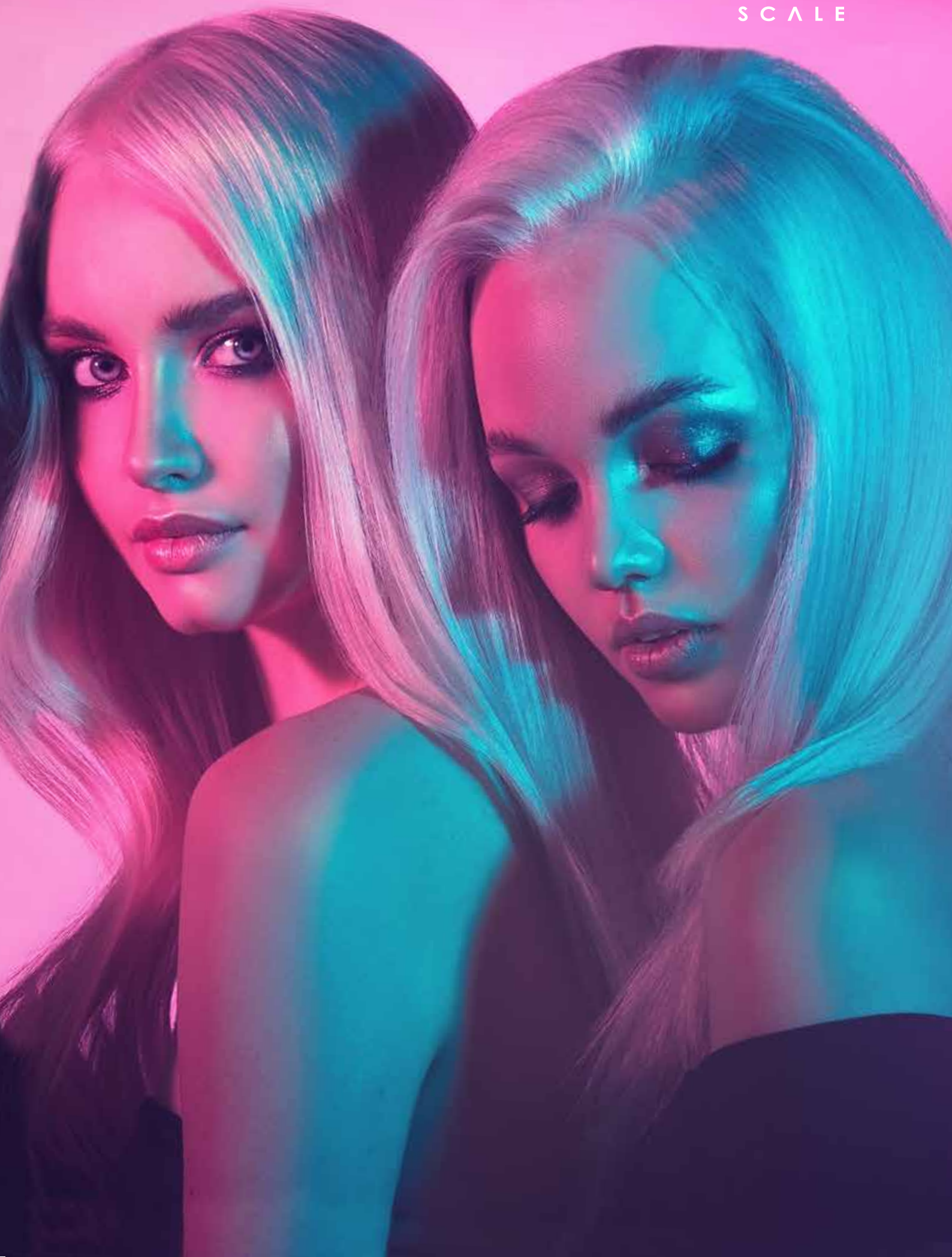
100 gr Tube



#WELOVEPETS

Light Scale Color is **100% VEGANA** and **CRUELTY FREE**.

L I G H T  
S C A L E



# COLOR

**LIGHT SCALE**

**“DIAMOND DUST AND HYDROLYZED  
PEARL ALLURING AND IRRESISTIBLE...  
THEY CAPTURE THE LIGHT AND  
MAKE IT STUNNING”**

**These precious stones** are within the formulas of the **latest generation cosmetics**, producing true ‘Beauty Addicted’ luxury treatments.

**Diamond dust and hydrolysed Pearl** create **extreme shine** and make the hair visibly healthier looking.

**Light Scale Color is 100% vegan.**  
No animal by-products or derived products or GMO substances are used in the formula.





L I G H T  
S C A L E

## DIAMOND DUST

Now in the cosmetic world  
more than ever  
Diamonds really are a girl's  
best friend

For centuries Gemstone Therapy with diamonds  
has been used as an alternative medicine.  
**Diamond dust** is also the unique preferred choice as  
an **exfoliant** and **brightener** for personal care and in  
cosmetic products.

## HYDROLYZED PEARL

**Pearls** have historically been used in Chinese medicine.  
They contain from 14 to 18 amino acids and minerals that  
perform an **anti-ageing** action on the skin and nourish and  
**strengthen** the hair.  
They **uniquely improve the keratin structure** and **so add**  
**volume** to the hair.  
Hydrolysed pearl perfectly simulates the distinguishing beauty  
and **brightness of pearls to the skin and hair**

# LIGHT SCALE

## THE PALETTE TO TONE YOUR BLONDE HAIR

### WARM EFFECT

#### **03** Honeyed reflections

Neutral effect

### NEUTRAL EFFECT

#### **07** Light Scale Venus Light

Powder reflections

### COOL EFFECT

#### **08** Light Scale Star Light

Mother-of-pearl/pearlised reflections

#### **02** Light Scale Moon Light

Ice reflections

SECRET

## COLOURING PROCESS

1

Always wear suitable gloves before preparing and applying LIGHT SCALE colour. Mix at a **ratio of 1:1** (for example: 30 g colouring cream + 30 g Developer) **with 10 Vol cream developer**. The nuances can be perfectly inter-mixed to create controllable creative effects and personalised colours.

2

**Apply** the product quickly and consistently to **dry hair or to hair that has been towel-dried hair after lightening**.

3

Process at room temperature until the desired result is achieved.  
Do not use any type of heat source.

**Light Scale Colour is ideal for lightened hair** (e.g. hair that has been lightened from level 7 to level 11)



### 4 - TO COMPLETE THE SERVICE

When processing is complete massage the processed colour with warm water and rinse thoroughly. Delicately wash the hair with **Top Care Repair Color Care Shampoo After-Colour Acid** and immediately afterwards, apply **Top Care Repair Color Care Conditioner pH Balancer** or **Lisaplex™** Hair Structure Filler to neutralise any residual oxidising agent and stabilise the colour.

# ANTI-YELLOW

LIGHT SCALE CARE

LIGHT SCALE CARE ANTI YELLOW LINE

THE PARTNER IN CRIME

OF BLONDIES

#LEGALLYBLONDE





THE NEW PROFESSIONAL **ANTI-YELLOW** SYSTEM FOR BLONDE,  
LIGHTENED, BLEACHED OR NATURALLY WHITE HAIR.

L I G H T  
S C A L E

THE SPECIAL **PURPLE PIGMENT** CONTAINED IN THE FORMULA HELPS TO NEUTRALISE UNDESIRABLE  
YELLOW REFLECTIONS IN ULTRA LIGHTENED AND GREY HAIR HELPING TO CREATE PERFECT CLEAN  
RESULTS.



# ANTI-YELLOW

## LIGHT SCALE CARE

“TAILOR MADE”

TAILOR-MADE TO MAINTAIN  
THE ORIGINAL BEAUTY  
OF YOUR BLONDE HAIR



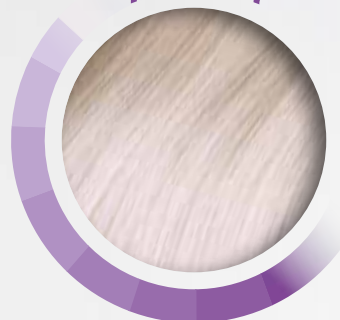


# LIGHT SCALE

BEFORE



AFTER



# ANTI-YELLOW

## LIGHT SCALE CARE

### LIGHT SCALE CARE ANTI-YELLOW SHAMPOO

**Surname:** Anti-Yellow

**Name:** Shampoo

**Profession:** Cleanses hair

**Stature:** 250/ 1000 ml

**Hair:** Blonde

**Neutralisation:** Light, Moderate, Intense and Extra Intense

**Distinctive marks:** The special purple pigment, contained in the formula, is deposited on the surface of the hair, neutralising the yellow reflections caused by pollution, the weather, smoke and the natural oxidation process.

**Directions for use:** Use disposable gloves, apply to damp hair, massage in thoroughly, leave on for up to 5 minutes depending on the desired level of neutralisation and rinse with plenty of warm water. Repeat the application if necessary.





## LIGHT SCALE CARE ANTI-YELLOW MASK

**Surname:** Anti-Yellow

**Name:** Mask

**Profession:** Neutralises, nourishes and hydrates the hair

**Stature:** 500/ 1000 ml

**Hair:** Blonde

**Neutralisation:** Intense and Extra Intense

**Distinctive marks:** Thanks to then enhanced concentration of purple pigment, it neutralises the most intense yellow reflections, leaving hair treated, nourished and beautifully hydrated.

**Directions for use:** Use disposable gloves, apply to washed and towel-dried hair especially on the lengths and ends, leave on for up to 5 minutes (\*) depending on the desired level of neutralisation and rinse with plenty of water.



\* The application time depends on the hair structure, porosity and starting tone level.

# A LIGHT SCALE CARE

## LIGHT SCALE CARE ANTI-YELLOW MOUSSE

**Surname:** Anti-Yellow

**Name:** Mousse

**Profession:** Neutralises undesirable tones and Conditions hair

**Stature:** 250 ml

**Hair:** Blonde

**Neutralisation:** Moderate and Extra Intense

**Distinctive marks:** Conditioning mousse, enriched with special purple pigment. Especially suitable for neutralising undesirable yellow tones, creating freshness and lightness and adding hydration especially to fine hair. Product to be rinsed out.

**Directions for use:** Use disposable gloves, apply to washed and towel-dried hair. Apply to the roots, lengths and ends, leave on for up to 5 (\*) minutes depending on the desired level of neutralisation then rinse out with plenty of warm water.



\*The application time depends on the hair structure, porosity and starting tone level.

## LIGHT SCALE CARE ANTI-YELLOW SPRAY

**Surname:** Anti-Yellow

**Name:** Spray

**Profession:** Heat Protects and detangles hair

**Stature:** 125 ml

**Hair:** Blonde

**Neutralisation:** Light, Moderate, Intense and Extra Intense

**Distinctive marks:** The lower concentration of purple pigment cleanses and intensifies highlights and blonde reflections. Adds shine and gloss to hair.

Detangles the hair and acts as a heat shield, protecting the hair from the high temperatures of blow dryers and straighteners.

Leave in - Do not rinse out.

**Directions for use:** Use disposable gloves Apply to the lengths and ends of washed and towel-dried hair then proceed to style as desired.



## YELLOW REFLECTION NEUTRALISATION (\*)

### LIGHT

Light Scale Care Shampoo Anti-yellow  
Light Scale Care Spray Anti-yellow



### INTENSE

Light Scale Care Shampoo Anti-yellow  
Light Scale Care Maschera Anti-yellow  
Light Scale Care Spray Anti-yellow



### MODERATE

Light Scale Care Shampoo Anti-yellow  
Light Scale Care Mousse Anti-yellow  
Light Scale Care Spray Anti-yellow



### EXTRA INTENSE

Light Scale Care Shampoo Anti-yellow  
Light Scale Care Maschera Anti-yellow  
Light Scale Care Mousse Anti-yellow  
Light Scale Care Spray Anti-yellow



\* A seconda della tipologia di capello e del risultato desiderato.

## LIGHT SCALE STEPS

### STEP 1 \_\_\_\_\_ BLEACHING OR COLOR REMOVAL

Bleach with either Light Scale Up to 9 Levels or Light Scale Up to 10 levels - Or if applicable use - Light Scale Color Remover.

### STEP 3 \_\_\_\_\_ TONE

Light Scale Color to customise blonde hair.  
Light Scale Color replenishes and selectively fortifies hair colours after bleaching or colour removal. They make the hair look shinier and thicker by replacing all of the cosmetic colour / melanin that is depleted with bleaching and colour removal.

### STEP 5 \_\_\_\_\_ MAINTENANCE AT HOME

Light Scale Care Anti-yellow line. Products as advised by the hair colourist.

### STEP 2 \_\_\_\_\_ NEUTRALISATION OF UNDESIRABLE YELLOW REFLECTIONS

Use Light Scale Care Anti-yellow line based on the desired result. (either light, moderate, intense or extra intense).

### STEP 4 \_\_\_\_\_ UNWANTED REFLECTIONS - NEUTRALISATION

Choose the Light Scale Care Anti-yellow line (light, moderate, intense or extra intense) based on the desired result.

### or DESIRED RESULT - COMPLETES THE COLOR SERVICE

Top Care Repair Color Care After Color Acid Shampoo  
Top Care Repair Color Care Conditioner pH Balancer or Lisaplex™ Hair Structure Filler.

# LIGHT SCALE PROGRAM



# L I G H T S C A L E



**LISAP** Laboratori Cosmetici S.p.A - Via Monte Lungo, 59 Rescaldina (Milano)

lisapitalia.com - lisaplex.com - lisapspa@lisapitalia.com

Tel +39 0331 937211 - Fax +39 0331-577988

